

Financials



I PROMISE TO PAY

FEDERAL RESERVE NOTE

IRIS Exchequer Financials - every support to maintain tight financial control

IRIS Exchequer Financials put you firmly in control, allowing you to manage your customers, suppliers and business professionally

User-friendly and reliable, IRIS Exchequer Financials cover much more than core accounting ledgers or cost centre and departmental budgeting. The software provides powerful in-depth reporting and analysis throughout the fully integrated suite.

The IRIS Exchequer Financial suite includes:

- **General Ledger** - a flexible, hierarchical structure with independent cost centres and department codes, allowing for powerful analysis
- **General Ledger Views** - configure up to 999 different views of the General Ledger data to present vital business information tailored to the users' needs
- **Multi-Currency Options** - scalable and flexible, with dual or multi-currency versions available to support international trading
- **Cashbook** - a detailed record of cash receipts and expenditures
- **Sales & Purchase Ledgers** - managing all transactional activity, from simple petty cash journals to multi-currency reconciliations
- **eBanking** - the facility to send payments via your bank's software online, as well as download and reconcile bank statements
- **IRIS Exchequer Payroll** - a flexible payroll system that ensures all employees are paid accurately and on time



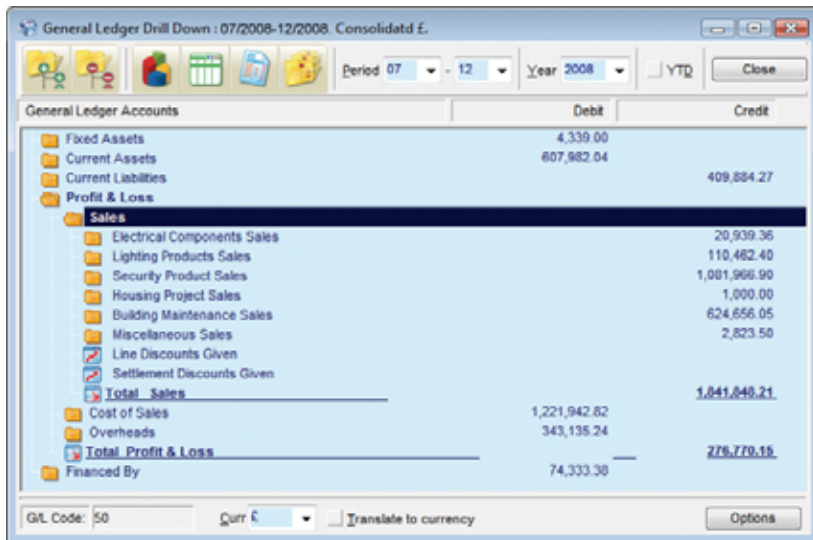
“ IRIS Exchequer's layout offers fast, secure navigation around the screens, and users can customise transaction screens to suit their own preferences. Once transactions have been entered into the IRIS Exchequer Daybooks, they remain easily visible and accessible. ”

AccountingWEB.co.uk - the largest independent online community for accounting and finance professionals in the UK, with over 110,000 unique users every month

General Ledger - access the data you need, in the way you need it

The innovative, flexible design of the General Ledger gives your users access to management information for any period or year by cost centre, department, or a combination of both - at a glance

Charts of accounts are set up in graphical trees, with folders as headings and sub-headings. This makes it simple to design, view and maintain.



General Ledger Drill Down : 07/2008-12/2008. Consolidatd É.

Period 07 - 12 Year 2008 YTD Close

General Ledger Accounts	Debit	Credit
Fixed Assets	4,339.00	
Current Assets	607,982.04	
Current Liabilities		409,884.27
Profit & Loss		
Sales		
Electrical Components Sales		20,939.36
Lighting Products Sales		110,482.40
Security Product Sales		1,001,966.90
Housing Project Sales		1,900.00
Building Maintenance Sales		624,656.05
Miscellaneous Sales		2,823.50
Line Discounts Given		
Settlement Discounts Given		
Total Sales		1,841,848.21
Cost of Sales	1,221,942.82	
Overheads	343,135.24	
Total Profit & Loss		276,770.15
Financed By	74,333.30	

GL Code: 50 Curr € Translate to currency Options

You can choose to view top-level information on monthly trends in a table, chart or even a graph and then take advantage of the General Ledger's unrivalled drill-down technology. This gives instant access to the originating transaction entry, so you can explore anomalies and analyse the root cause. Additionally, if you require more detail, you can use the instant 'sideways' Object-Drill to view all information related to that transaction.

Create an intuitive business resource

IRIS Exchequer allows you to set up multiple General Ledger codes with unlimited levels and sub-levels within your accounting structure

Furthermore, you can optionally use cost centre and department codes to add further dimensions to your analysis. In fact, in addition to the General Ledger code, cost centre and department, each transaction line has further user-definable fields that can be used for analysis purposes.

Cost centres and departments are set up independently from the General Ledger itself, making it simple to maintain yet extremely powerful. You can view any General Ledger balance by cost centre, department or a combination of both at a glance.

Everything is designed to make IRIS Exchequer a pleasure to use. Screen characteristics can be set to the user's preferences, with different colours and screen formats to increase productivity. With simple, logical navigation and a powerful inbuilt search engine, finding information becomes truly effortless.



“

IRIS Exchequer's report writing functionality enables us to close month-end within a single day. IRIS Exchequer frees up 20% of the finance department's time by eliminating manual administration processes, and this enables finance staff to be re-deployed on to more business-critical tasks, such as budgeting, forecasting and cost analysis.

Capricorn Automotive - manufacturer of boring equipment including cylinder liners and pistons for the motor sport industry

”

Develop unprecedented business insight

Compare performance in seconds

Compare this year's performance with last year's, and the year before that with ease. Simply by changing the period or year, you can go back in time to view past financial performance. You can display several General Ledgers on-screen at once, with each set to a different period, year or currency. The result: an accurate visual snapshot that lets you easily track performance, eliminating the need to print lengthy reports.

Comparing sales team and individual performance; sales, costs and profitability in different branches; sales of different product lines... it all takes just a moment. In fact, customers report that the information IRIS Exchequer supplies - and the way it supplies it - has helped them to transform their businesses.

Key benefits

- Multi-dimensional analysis with independent cost centre and department codes
- No destructive period or year end routines
- Ability to restructure the General Ledger using 'drag and drop' as your own business adapts
- Instant graphical view of finances
- View balances for any period or year with on-screen comparisons
- Powerful drill-down and drill-across through to transaction level
- Live dynamic links with Microsoft Excel for quick and simple management reporting
- Powerful budget control

General Ledger Views - a true picture of what is happening in your business

Offering even greater visibility on the financial data within your organisation is the powerful General Ledger Views

With the option to configure up to 999 different views, this feature allows users at all levels to see a tailored view of just the information they wish to review. This flexible set up can deliver actual figures, future balances, committed costs and much more, with the ability to switch easily between different screens.

All this information is protected with strong but easy to maintain security, both in the main solution and its reporting tools. The IRIS Exchequer General Ledger Views are simple to use for even the most occasional user.

Key benefits

- Give greater access to key personnel with restricted views of the General Ledger
- View potential effects of changes before actually applying them
- Protect sensitive data including salaries, loans and bank accounts
- View segmented data on-screen in seconds without the need to print reports



Rapid access to information is essential if an organisation is to react quickly to business opportunities or potential problems, such as overspend. By automating the flow of information into Microsoft Excel, Wilton Estate has achieved the improvements in budgetary control and performance monitoring required to sustain business success.

Wilton Estate - comprises numerous houses, tenanted farms and Wilton House - a stately home open to the public with associated café, shop and garden centre



Multi-currency - support wherever you take your business

As trade barriers come down and organisations 'go global', multi-currency becomes an essential feature of your accounting system

IRIS Exchequer provides an impressive solution which gives you the freedom and confidence to expand into new markets. It sets new standards in mid-range multi-currency accounting.

Choose the level that suits your business model

What sets IRIS Exchequer apart from many other packages is that right from the beginning it was designed as a multi-currency system, rather than having currency functionality 'bolted on' as an afterthought. As a result, it provides a truly scalable solution with multi-currency and dual-currency versions of the same core system. As with all the features in IRIS Exchequer, upgrading between versions is a painless process.

The IRIS Exchequer General Ledger allows you to view balances in different currencies, as well as viewing transactions in their originally entered currency. Information can be consolidated into your base or home currency, making it simpler to view and reconcile bank accounts and profit and loss data.

You can also 'translate' the General Ledger to any other currency simply by selecting the currency you wish to view, then selecting a translation currency. This powerful feature is also available for key reports, and is especially useful for head office reporting in a different currency.

The unique 'history' window available throughout IRIS Exchequer shows period balances in the currency selected, with the ability to drill-down to the original transactions, all of which are held in their original currency.

Currency functionality that's woven into the fabric of the system

All IRIS Exchequer modules are designed and engineered to be fully multi-currency compliant throughout. Sales and purchase ledger accounts will allow any combination of currencies within a single ledger. Payments and receipts can be entered in one currency and allocated to transactions in any other currency. Statements can be separated by individual currency or consolidated into a single statement.

Keep your currencies current

Whether you revalue your currencies once a year or several times each month, IRIS Exchequer has a currency revaluation feature to automatically revalue your balance sheet, including individual debtors and creditors, and generate a journal entry for the currency variance.

Our Ref	Your Ref	Date	Original Value	Total Value	Amount Settled	Outstanding	Date Due	Status
SNV000333	SOR000669	05/09/2006	€183.84	€130.52		€130.52	05/10/2006	
SNV000062		20/09/2006	€100.00	€71.00		€71.00	31/10/2006	
SNV000304	SOR000609	20/09/2006	€2,426.39	€1,722.73	€1,095.00	€657.73	20/10/2006	Notes
SNV000151	AS72727	05/10/2006	€100.00	€71.00		€71.00	30/11/2006	Notes
SNV000156	AS72727	05/10/2006	€100.00	€71.00		€71.00	30/11/2006	Notes
SNV000334	SOR000724	05/10/2006	€15,485.05	€10,994.38		€10,994.38	05/11/2006	
SNV000387	SOR000724	05/10/2006	€2,426.39	€1,722.73		€1,722.73	05/11/2006	
SNV000182		05/11/2006	€100.00	€71.00		€71.00	31/12/2006	Notes
SNV000390	SOR000751	05/11/2006	€7,037.70	€4,996.82		€4,996.82	05/12/2006	
SRV000544		30/11/2006	€2,177.58	€2,177.58			30/11/2006	
SNV000241		12/12/2006	€100.00	€71.00		€71.00	31/01/2007	Notes
SNV000271		12/12/2006	€100.00	€71.00		€71.00	31/01/2007	Notes

Unallocated: 0.00 Status: Due: 20/10/2006 Total: €2,426.39

“As a result of adopting IRIS Exchequer, we have seen some key business improvements. The reports give us greater visibility, so we can reduce costs related to stock and overheads. The system is reliable, down time is minimal and process efficiencies are good.”

Mediplus - manufacturer of specialist medical disposables for the hospital market

Key benefits

- Truly scalable solution with dual and full multi-currency versions
- Keeps all historical transactions in the original currencies
- Allows viewing and reconciling of the General Ledger in original currencies and consolidation
- Ability to translate values from one currency to any other on-screen or via key reports
- Automatic currency revaluation facility
- Option to fix exchange rates on orders
- Allocation of multiple currencies within one sales or purchase ledger account
- Produces statements for individual currencies or consolidated currency
- Comprehensive multi-currency reporting options
- Powerful consolidation reporting via live dynamic links with Microsoft Excel
- EMU compliant, plus base currency conversion

Cashbook - a simple yet essential financial tool

No accounting system would be complete without its cashbook

IRIS Exchequer includes a fully integrated cashbook which is extremely simple to use. Users can enter transactions quickly and easily and keep it up-to-date with minimum effort.

The number of accounts that can be individually reconciled is unlimited, giving you the freedom to organise and break down your records into detailed groups as required. This, in turn, enables you to easily reconcile accounts such as accruals and prepayments, as well as other contra accounts and bank accounts.

Key benefits

- Flexible cashbook reconciliation options for all accounts
- Payments can be easily grouped, ensuring reconciliation is available with a single click
- Mis-allocations can be corrected easily
- Ability to print cheques or send payments electronically in conjunction with eBanking module

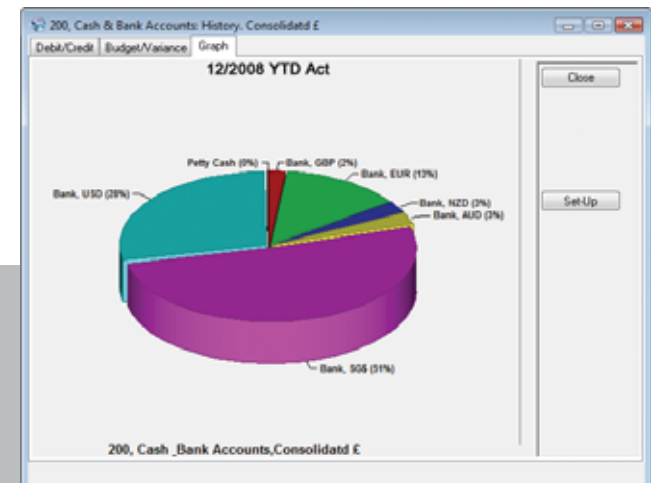
Revalue Currency Rates.

Description	Symbol	Screen Printer	Daily Rate	Company Rate	1/x Float	Triangulation	Rate
0 Consolidated	£	£	1.000000	1.000000		0	0.000000
1 Sterling	£	£	1.000000	1.000000		0	0.000000
2 Euro	€	€	1.261470	1.261470		0	0.000000
3 Kroner	DKR	DKR	9.410760	9.410760		0	0.000000
4 NZ Dollar	NZD	NZD	2.541210	2.541210		0	0.000000
5 AUS Dollar	AUD	AUD	2.069240	2.069240		0	0.000000
6 Sing Dollar	SBD	SBD	2.666666			0	0.000000
7 US Dollar	US\$	US\$	1.949000			0	0.000000
8 S.A. Rand	SAR	SAR	15.054900			0	0.000000
9 Swiss Franc	CHF	CHF	2.032780			0	0.000000
10 Jpn Yen	JPY	JPY	200.725000			0	0.000000
11 Can Dollar	CAD	CAD	1.562680			0	0.000000

Revalue

2000 Bank, USD History: US Dollar USD

Period	Debit	Credit	Balance
01/0001	US\$42,243.58	US\$0.00	US\$42,243.58
06/0001	US\$16,210.00	US\$0.00	US\$16,210.00
11/0001	US\$71,111.33	US\$0.00	US\$71,111.33
YTD0001	US\$129,564.91	US\$0.00	US\$129,564.91
01/0002	US\$21,833.45	US\$0.00	US\$21,833.45
02/0002	US\$631,897.18	US\$0.00	US\$631,897.18
03/0002	US\$87,203.74	US\$10,000.00	US\$242,796.26
06/0002	US\$0.00	US\$244,000.00	US\$244,000.00
01/0003	US\$22,250.00	US\$0.00	US\$22,250.00
06/0003	US\$12,315.75	US\$0.00	US\$12,315.75
06/0003	US\$167,848.37	US\$0.00	US\$167,848.37
11/0003	US\$19,589.00	US\$0.00	US\$19,589.00
YTD0003	US\$196,883.32	US\$0.00	US\$196,883.32



Sales & Purchase Ledgers - spend your time using information not searching for it

IRIS Exchequer Sales & Purchase Ledgers are designed to give you immediate access to any account information

Save time finding information

The trader list offers a fast and convenient search tool for finding the customer or supplier you are looking for

By simply typing the first few letters of their name, you are taken straight to the relevant account without having to remember complicated codes or lengthy contact details.

The unique list-scanning feature enables you to open up other windows, such as the account details, the ObjectCredit Controller or the gross profit history screen, and see them update simultaneously as you move up and down the trader list. You can even open multiple windows in this way and each will update as you scan through the accounts, instantly and automatically.

You can view how invoices and payments have been matched, with options to allocate, un-allocate and re-allocate transactions within the ledger.

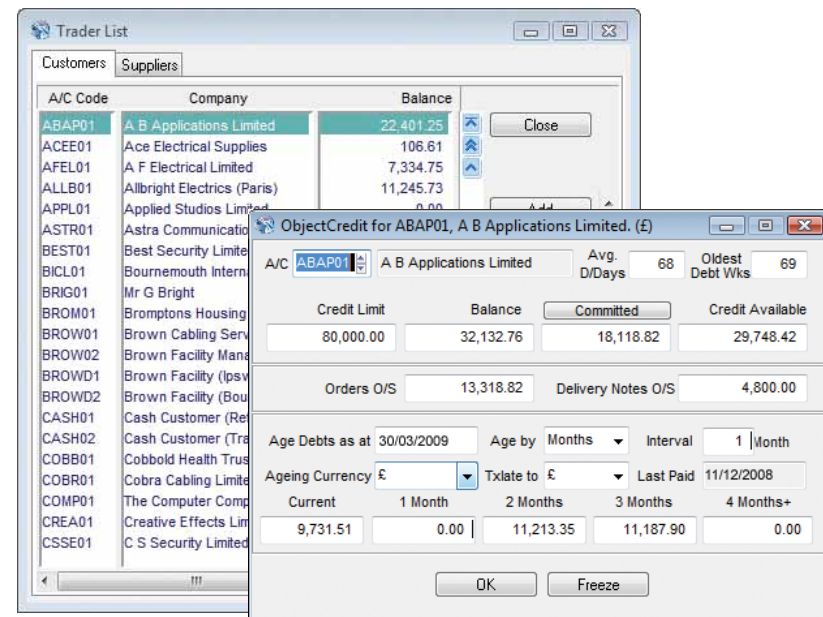
To make life easier, you can view or reprint transactions at any time. The match and links facilities ensure instant access to related documents, including original orders, payments and even scanned invoices.

Save time entering information

All transactions, such as invoices, credit notes, quotations and payments are entered via a simple-to-use daybook

Transactions can also be entered as a batch rather than individually. General overhead purchases, for example, may not require the full detail of other transactions and can be added using the batch-entry screen, which has many time-saving facilities. Once complete, payments can be generated either as cheques, remittance advices or in electronic format.

IRIS Exchequer is so versatile that each account has a ledger card, which instantly updates as transactions are entered. The ledger retains all historical transactions, with the ability to filter outstanding transactions or view transactions in a specific period.



IRIS Exchequer is a vast improvement on our previous methods of working. We are already saving time and the system provides major improvements to our accounting processes.



Tindle Radio - owns and operates 13 local commercial radio stations on the UK mainland, Channel Islands and Ireland

Never forget a thing

An interactive notepad system at the heart of IRIS Exchequer means key records and transactions can have an unlimited number of notes stored against each of them

Set reminders for yourself or other users on the system, and manage them with the IRIS Exchequer central workflow diary, enabling users to view their reminders and drill-down directly into the originating record or transaction.

You can also record notes about contacts, for example to help you offer personalised service to customers the next time they call.

eBanking

Offering the facility to send payments via your bank's software is one of the most efficient ways to save money

Add to this the ability to download statement data and perform automatic bank reconciliations and it's easy to see why the IRIS Exchequer eBanking module is popular with new and existing users. The facility is available for all commonly used banks and is proven to save literally hours every week.



Key benefits

- Simple trader list with the ability to open multiple windows and scan through records
- Ability to raise quotations, invoices, credit notes, payments and refunds for customers and suppliers
- Unlimited historical periods or years kept
- View balances, sales and margins by period/year
- Drill-down to original transaction entry, with ability to view margins per item/product
- Easy daybook entry and high speed batch-entry for high volume payment runs
- Facility for recurring transactions and quotations
- Integrates automatically with eBanking software
- Notepad alert system throughout linked to a central workflow diary, with drill-down to source information
- Live dynamic links between balances, sales, margins and Microsoft Excel for instant management reporting
- Reprint, fax and email options, so you can reduce paper-based communications
- Flexible ledger with un-allocate facility and simple error correction tools to restructure the General Ledger even after posting has taken place
- Immediate access to customer and supplier account information
- Creates transactions in seconds including quotations, invoices, credit notes, payments and refunds

“ In order for Tayberry to meet tomorrow's business challenges, we must ensure we have the right technology in place to support our growth. IRIS Exchequer will help us to improve our service to customers while reducing costs.

G H Tayberry & Co - wholesaler of clothing, footwear and accessories to the UK Garden Centre industry as well as equestrian, farming and outdoor markets

”

Payroll

IRIS Exchequer Payroll is so easy to use

IRIS Exchequer Payroll allows payments and deductions to be defined by the user to suit the business needs, leaving the system to take care of all the statutory calculations like Tax, National Insurance, Student Loan Deductions, Statutory Sick Pay, Statutory Maternity/Paternity and Adoption Pay.

As a flexible payroll system, IRIS Exchequer Payroll enables you to manage specific company requirements. Whether you are running a payroll system for more than a 100 employees, or running multiple company payrolls, with IRIS Exchequer Payroll you can be sure all employees are paid accurately and on time. You can be safe in the knowledge, too, that your business is up to date with the legislation.

Key benefits

- Bespoke reports are easy to produce
- Historical payslips are available on demand
- Management information can be obtained quickly and easily
- Auto absence calculation for SMP/SAP/SPP and SSP
- Online filing at year end
- HMRC accredited
- Integrates with IRIS HR Manager

Find out more today

IRIS Exchequer Financials are the backbone of the IRIS Exchequer solution

They will soon become the backbone of your business too, as they bring wide-ranging automation to routine processes and provide your teams with exceptional support.

For more information on the value which IRIS Exchequer Financials could bring to your organisation, please contact us.



IRIS Exchequer saves us around 4 to 5 days per month as a result of the level of automation that the system enables within the finance department.

Barry Howard Homes - one of the Midland region's larger independent house builders now constructing in excess of 120 dwelling units per annum





CHJ44/41% EG

7318 T

43% 912% 12%

www.iris.co.uk/exchequer

